


Rates of Evolution

How long does this all
take?

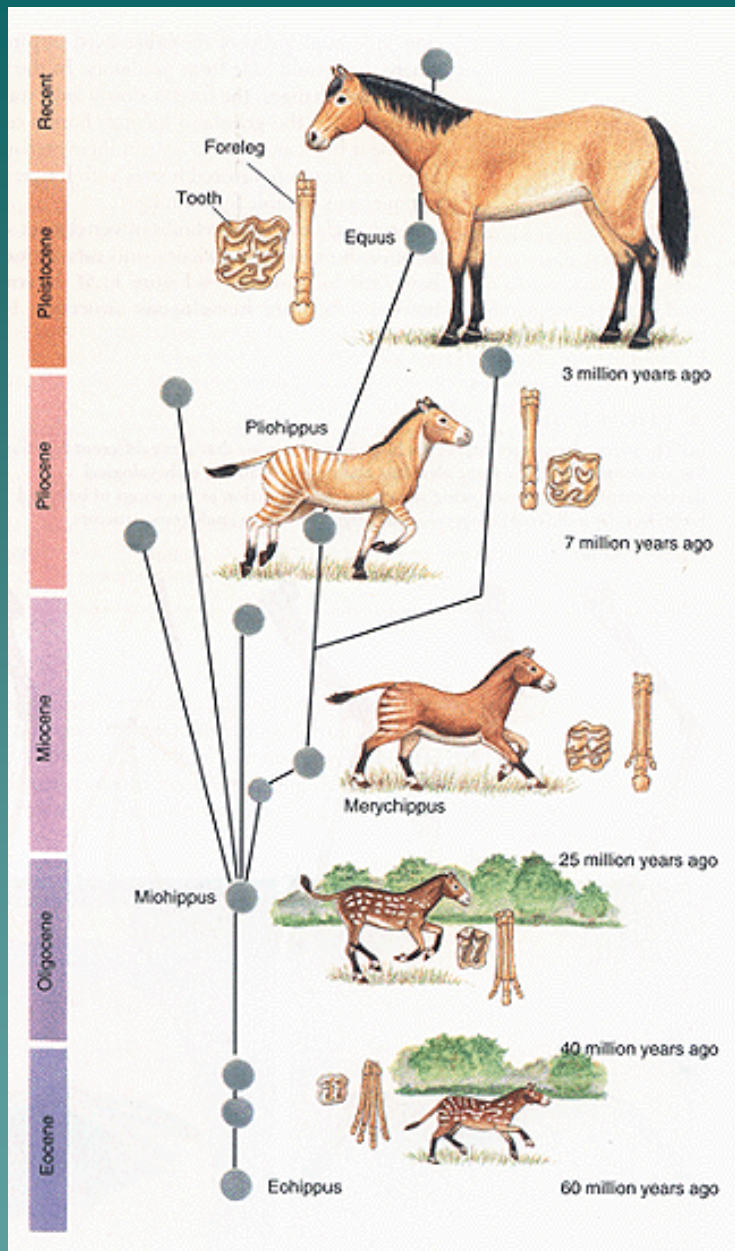


Gradualism

- ◆ Slow, constant rate of change.
- ◆ Supported by “transitional fossils”

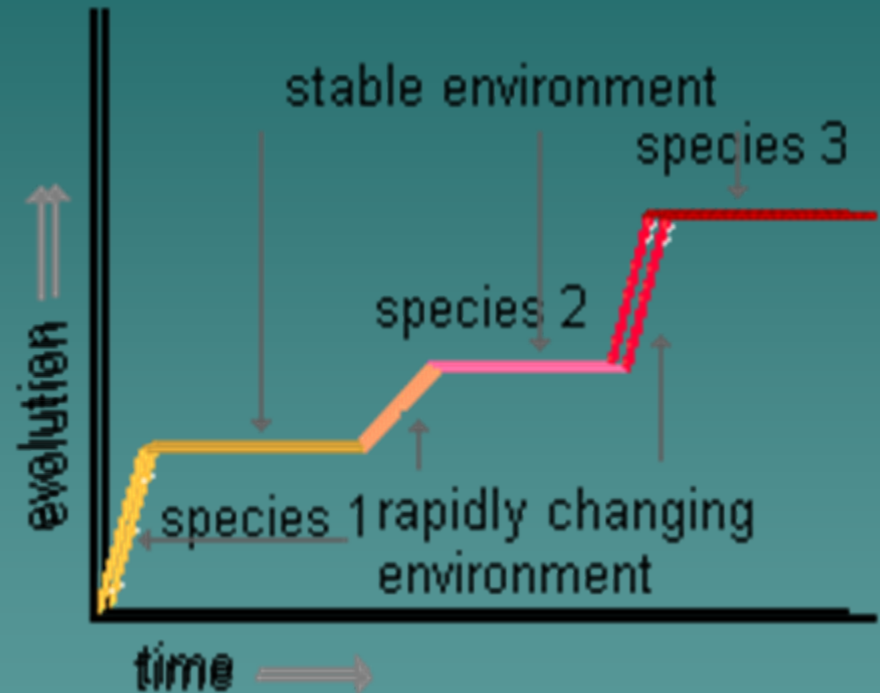


Horsies!



Punctuated Equilibrium

- ◆ Change occurs in “fits and starts” with longer periods of little change.
- ◆ Supported by lack of transitional fossils.

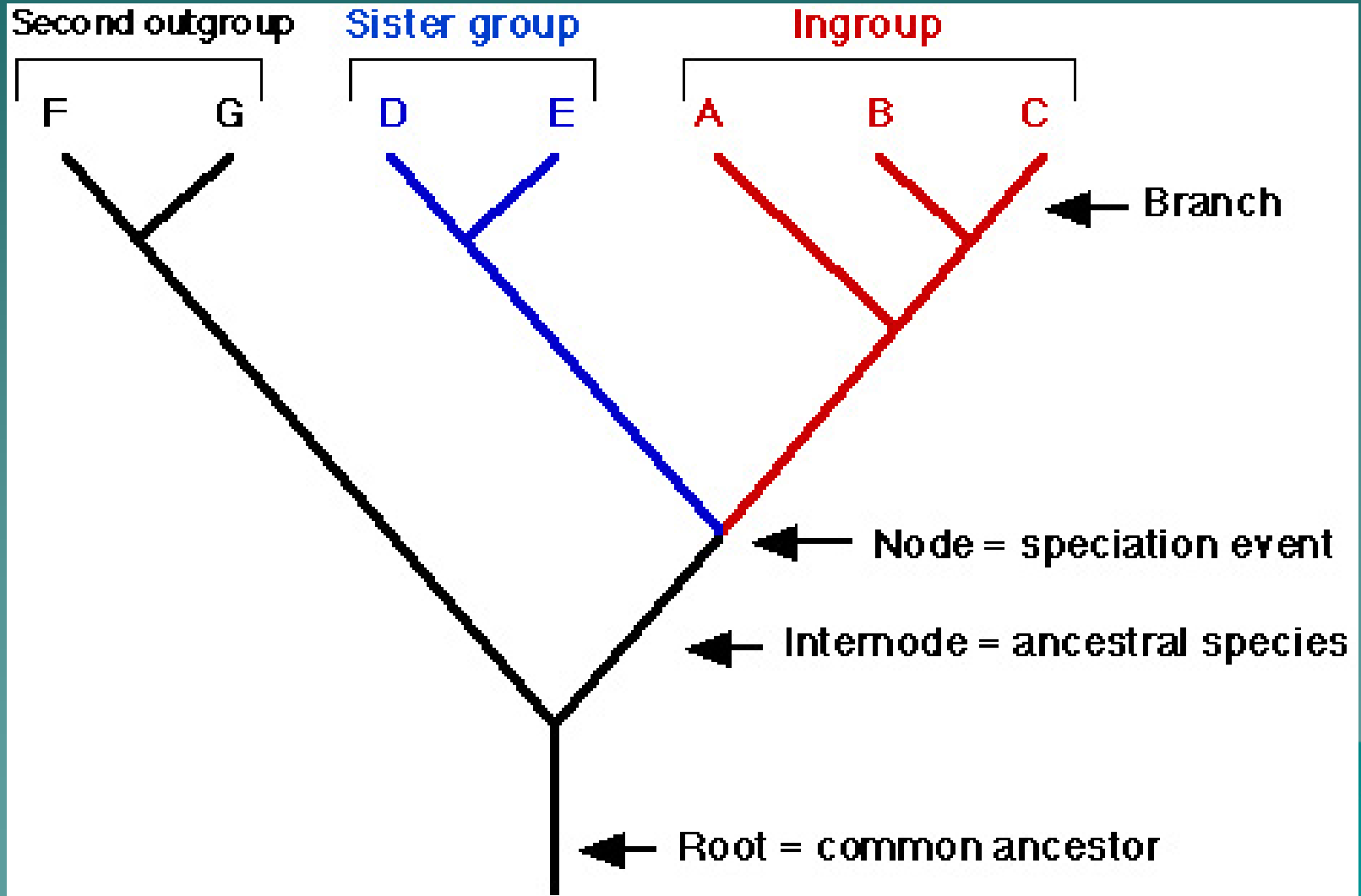


Cladograms

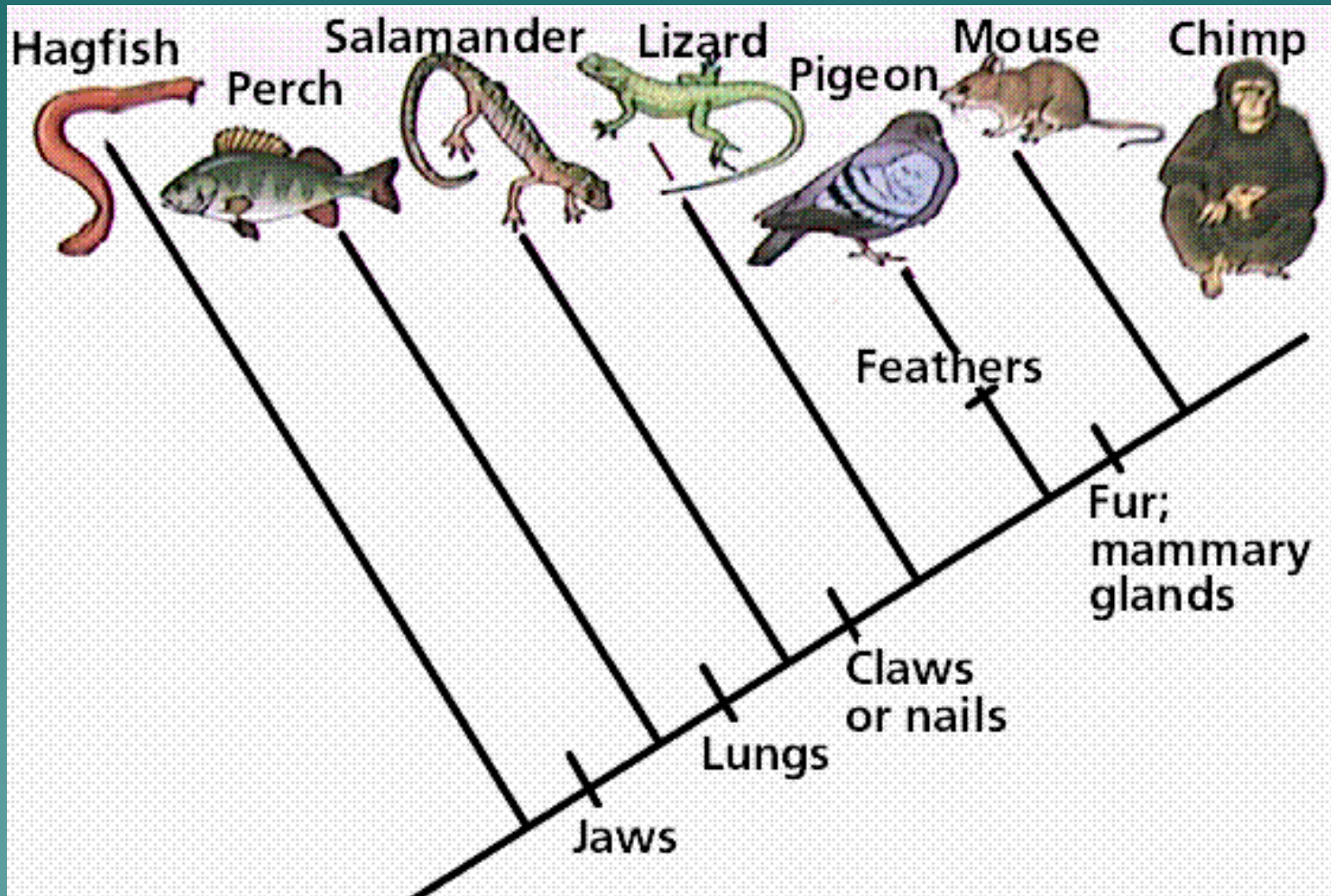
Evolutionary Family Trees

A stylized silhouette of a mountain range in a darker shade of teal, located in the bottom right corner of the slide.

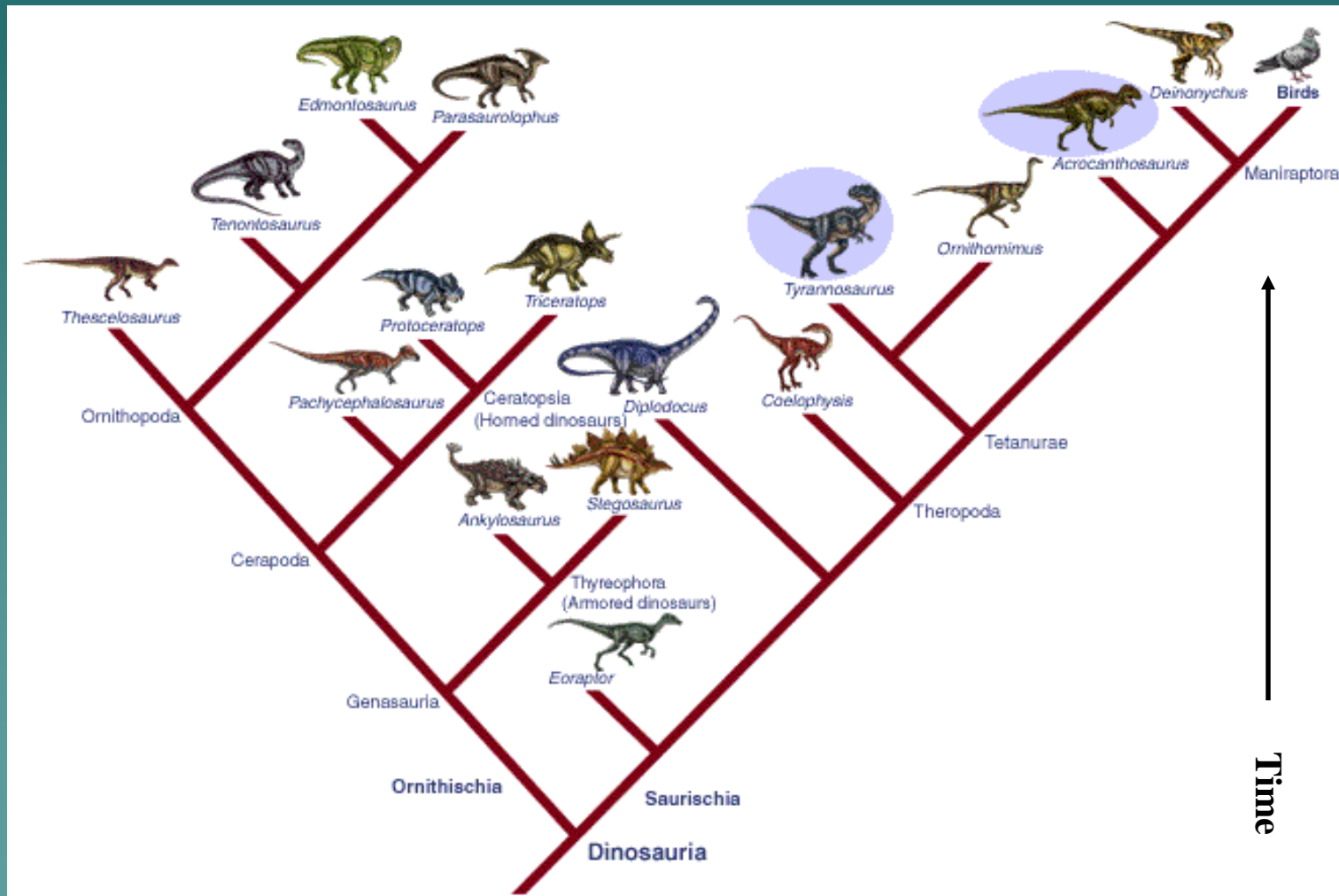
The Basics



An Example



Another Example



Oh my....

