

Meiosis

Two different types of cells:

Haploid=

$n =$ _____

$2n =$ _____

Polyploidy = _____

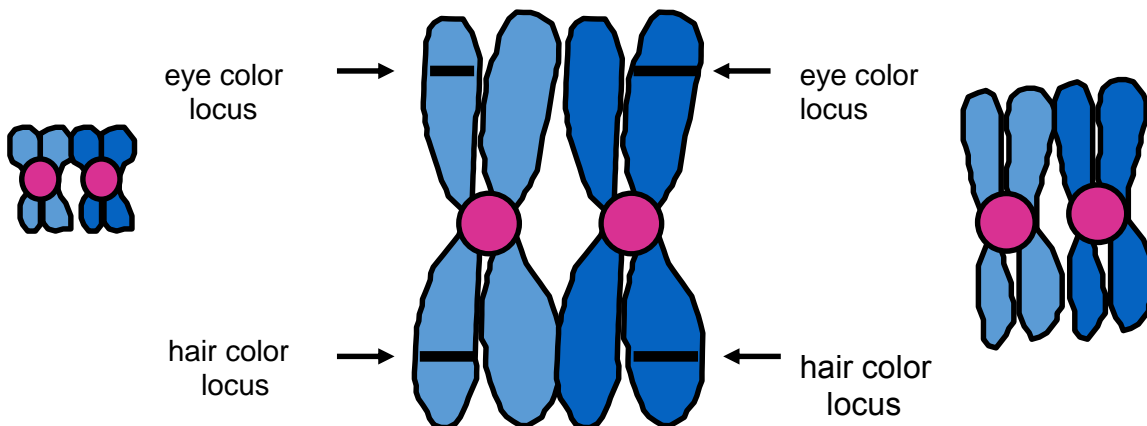
Gametes:

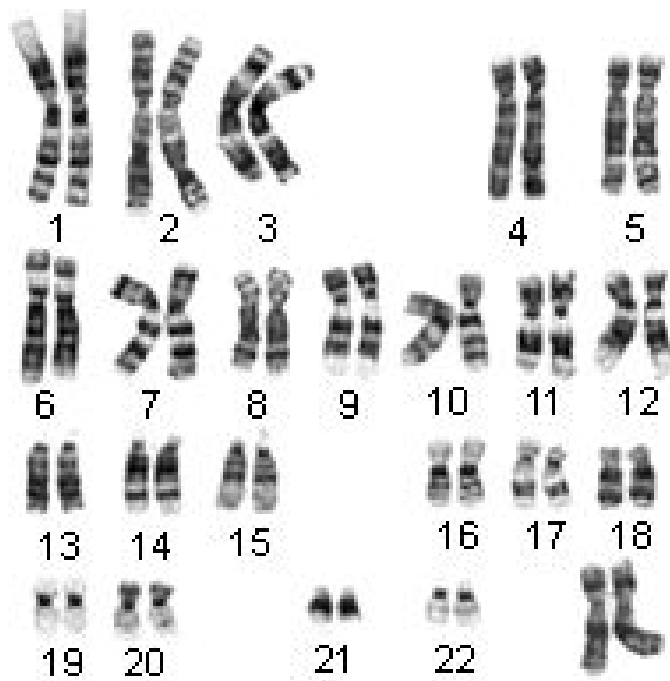
Zygote =

Diploidy =

Homologous Chromosomes:

- Pair of chromosomes
- Homologous pairs carry genes controlling the same inherited traits.
- Each locus _____ is in the same position on homologues.
- Humans have ___ pairs of homologous chromosomes.
 ___ pairs of autosomes
 _____ pair of sex chromosomes





Meiosis

“Reduction Division”

Meiosis I:

Prophase I

- Longest and most complex phase.
- 90% of the meiotic process is spent in Prophase I

Tetrad =

Synapsis =

Metaphase I

Anaphase I

Telophase I

Meiosis II:

How many total cells formed?