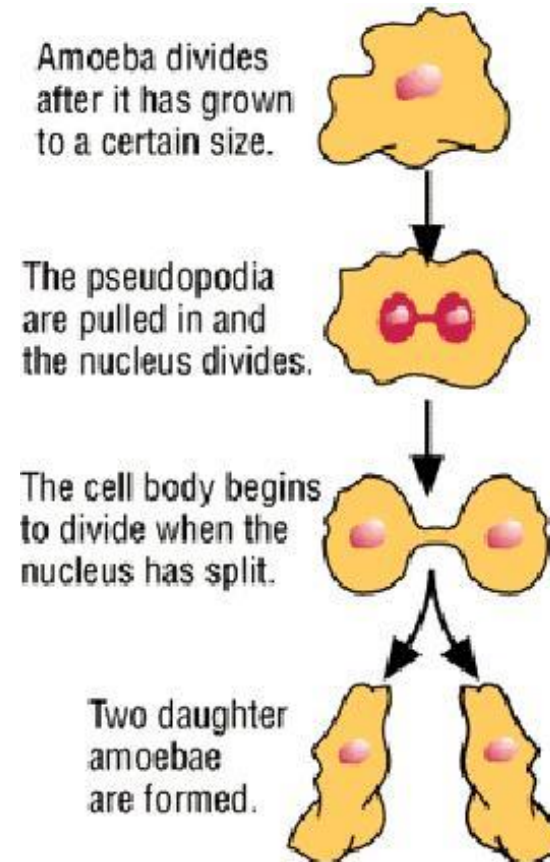


# Asexual Reproduction

# Binary fission

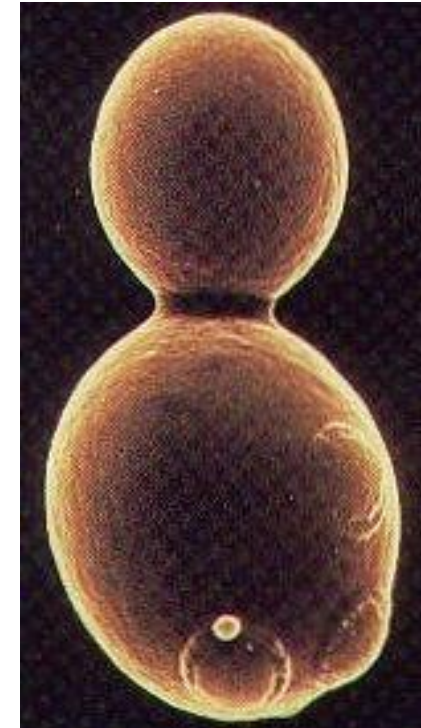
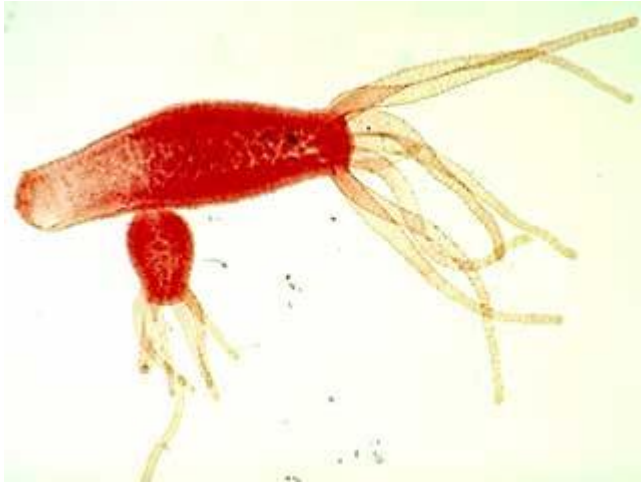
**The simplest form.**

**Should look familiar**



# Budding

A small, new individual grows off of a single parent

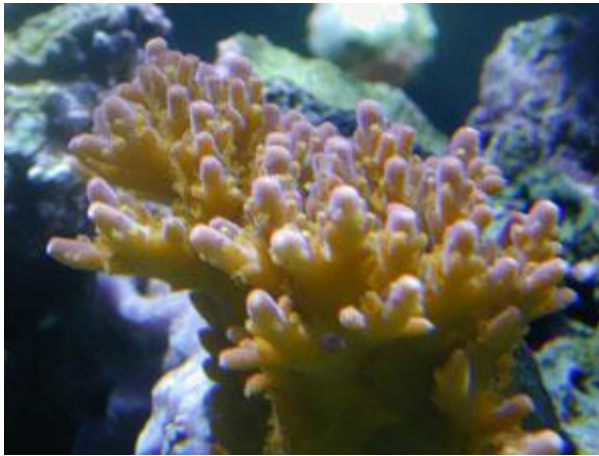


**Unequal  
cytoplasmic  
division**

Yeast - budding

# Fragmentation

**Body of the parent breaks into distinct pieces, each of which can produce an offspring.**



**Pieces of coral broken off in storms can grow into new colonies.**



**A new starfish can grow from one detached arm.**

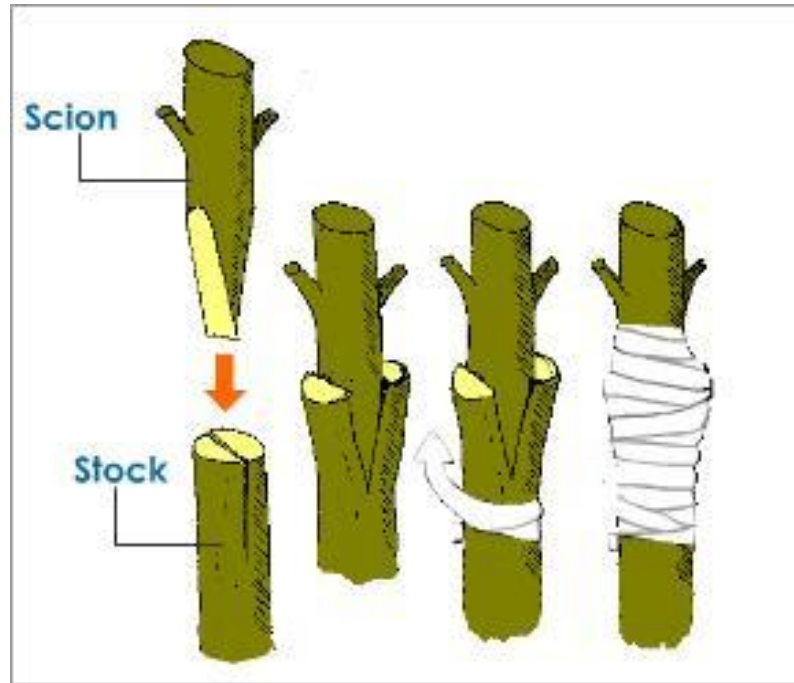
# Fragmentation- plant cuttings

**Some plants can grow from cutting them up and replanting them.**



# Grafting

Cutting a branch from one plant and attaching it to another plant



# Vegetative Propagation

**Offspring may be produced by runners, bulbs, rhizomes or tubers.**



# Parthenogenesis

A Komodo dragon is shown resting on a light-colored, textured rock. The dragon's head is in the upper right, and its body extends towards the left. Its front legs are visible, with sharp claws. The background is dark and out of focus.

**Development from an unfertilized egg**

**There are no known cases of parthenogenesis in mammals.**