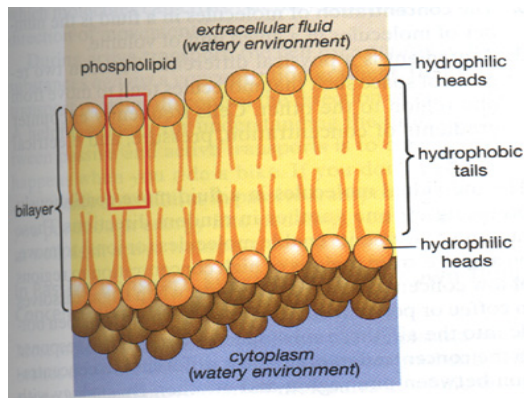
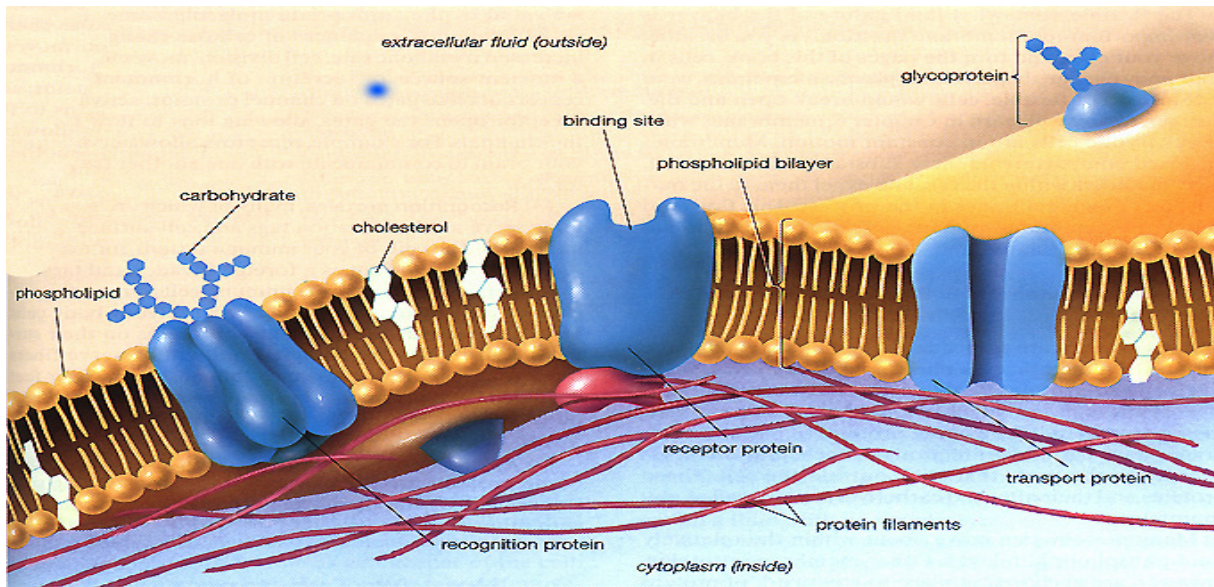


# The Plasma Membrane/ Cell Membrane



## Structure:

\_\_\_\_\_ layers of \_\_\_\_\_ molecules  
 (\_\_\_\_\_ layer)

- \_\_\_\_\_ to one another – held in place by \_\_\_\_\_ and \_\_\_\_\_ ends of \_\_\_\_\_
- Allows membrane to “\_\_\_\_\_” – form \_\_\_\_\_, divide, etc.
- Kinda like \_\_\_\_\_
- \_\_\_\_\_ with and without attached \_\_\_\_\_ “trees” and cholesterol all floating in the lipids (\_\_\_\_\_ Model)

# Functions:

## Receptor Molecules

Some of the \_\_\_\_\_ and \_\_\_\_\_ "trees" on the surface act as \_\_\_\_\_

- Allow \_\_\_\_\_ cells to detect \_\_\_\_\_ and \_\_\_\_\_ cells
- Detects useful materials ("\_\_\_\_\_") in environment for \_\_\_\_\_.
- Allows cells to \_\_\_\_\_ functions – e.g. neurotransmitters send nerve "signal" (impulse) to next cell.

## Transport

\_\_\_\_\_ material in and out of the cell

- \_\_\_\_\_ material \_\_\_\_\_ through membrane
- Other material is " \_\_\_\_\_ " through.
- Still other material \_\_\_\_\_ get through (or "fools" the membrane into letting it in)
- \_\_\_\_\_ allows \_\_\_\_\_ of cell to be different from \_\_\_\_\_.